

Operation Manual

Parts List



CAPACITY:1000 kgs

HIGH LIFT HAND TRUCK

With single ram

CAUTION: Owner and Operator MUST read and understand this manual before use the truck.

Specifications

Model	HLT1C	
Rated lifting capacity	1000 kg	
Max. Fork height	800 mm	
Min. Fork height	85 ± 2 mm	
Fork length	1150 mm	
Fork width (outside)	540 mm	680mm
Pump times	Fast: 28	Slow: 78
Descending speed	∠ 0.1 mm/second	
N.W.	128 kg	133kg

Safety Instructions

1. The truck shall be used in accordance with instructions handbook.
2. Don't put the hand & foot under the fork at any time.
3. Don't work on the slope surface.
4. Quick lifting is prohibited for loads of more than 300 kg. Any manipulation of the pressure relief valve is strictly prohibited. All assembling, adjusting and maintenance shall only be done by industrial mechanics trained people. These people must be familiar with all safety regulations of European and national where the item is in use relating to the operation and maintenance of pedestrian controlled industrial trucks.
5. Load should be put on the fork center. Side-load is strictly prohibited.
6. The truck shall not be used to transport persons.
7. It is recommended to the driver to wear security shoes.
8. No modifications shall be carried out which adversely affect

the compliance of the truck with prEN 1757-4.

Installation & Adjustment

1. Screw(part No.132)

- To prevent oil-leaking from oil tank during transportation, Air Screw (part No.132) is replaced with Oil-sealing Screw in the factory. But it has to be replaced back when you put this truck in use.
- How to change: Screw out Oil-sealing Screw, then screw in Air Screw , thus keep oil tank always connecting with atmosphere.

1.Handle

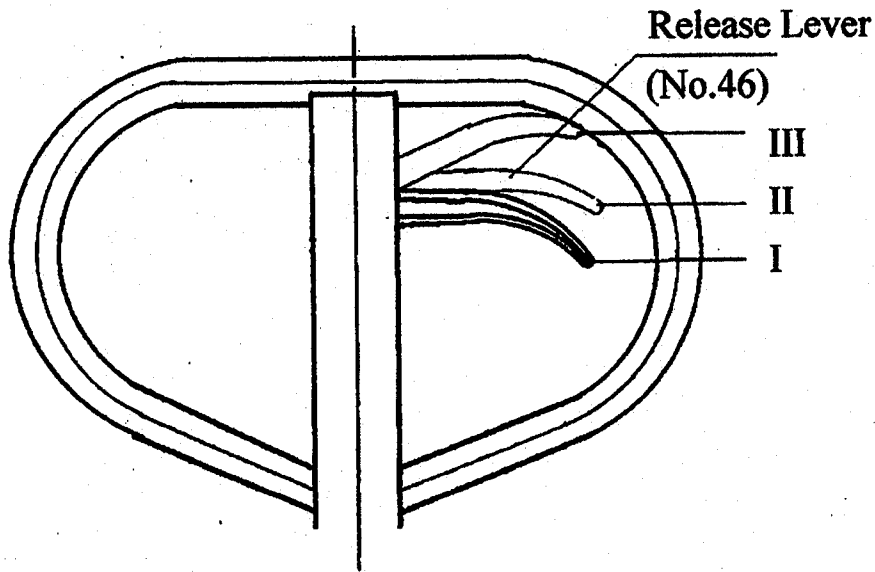
During transportation, the handle is disassembled from the truck and packed separately. It has to be assembled back and adjusted properly and carefully before use.

A. Handle installation:

- Take 3 pieces of M10 Nut (No.49) & Hex Wrench from spare parts bag. Select handle to match the truck with the same fitting numbers.
- Assemble the handle on the Handle Base (No.55) with 3 pieces of M10 Nut & Spring Washer tightly.
- Put the chain's Eye Bolt (No.36) in the slot at the front end of Pendulum Arm (No.124)

B. Handle adjustment

- There are 3 different positions with different functions for the Release Lever (part No.46). See picture 1



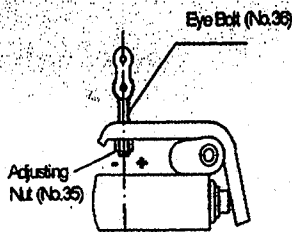
Picture 1

Position I: Quick lifting for fork.

Position II: Slow lifting for fork

Position III: Descending for fork

- Test different functions by putting the Release Lever in 3 different positions respectively. If it does not function properly, then adjusting Lock Nut (No.35) by following process. See picture 2

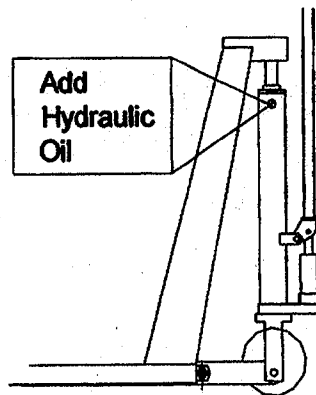


Picture 2

Problems	Turning direction of Lock Nut
Fork not lifted up	- (clockwise)
Fork not lowering down	+ (counter-clockwise)

2. How to release the air from the pump.

See picture 3



Picture 3

When pushing the handle down, the fork can't be lifted instantly. Please loosen the Screw (No.130) on the pump while pushing the handle down slowly to release the air from the pump. Then tighten the screw.

3. When to add oil

See Picture 3

If the fork can't be pumped up to its rated highest position, you may have to add hydraulic oil into the oil tank. The hydraulic fluid to be used must have a quality of ISO VG22 or equivalence. Mixing of different fluids is prohibited!

TROUBLE SHOOTING GUIDE

Items	Symptom	Possible cause	Aliments
1	Fork can not be pumped up	<ol style="list-style-type: none"> 1. Low oil level in oil tank. 2. Exist air in the hydraulic system. 3. Pendulum arm nut is not adjusted properly. 	<ol style="list-style-type: none"> 1. Add proper hydraulic oil. 2. Fast operating the handle for several times. Bleed the system. 3. Adjust pendulum arm screw.(see picture 2)
2	Fork can't be released down	<ol style="list-style-type: none"> 1. Fork blocked. 2. Pendulum arm nut not adjusted properly. 	<ol style="list-style-type: none"> 1. Check and remove the block. 2. Adjust pendulum arm nut properly. (see picture 2)
3	Fork can't be pumped up to rated highest position.	Oil is not enough.	Add hydraulic oil. (see picture 3)

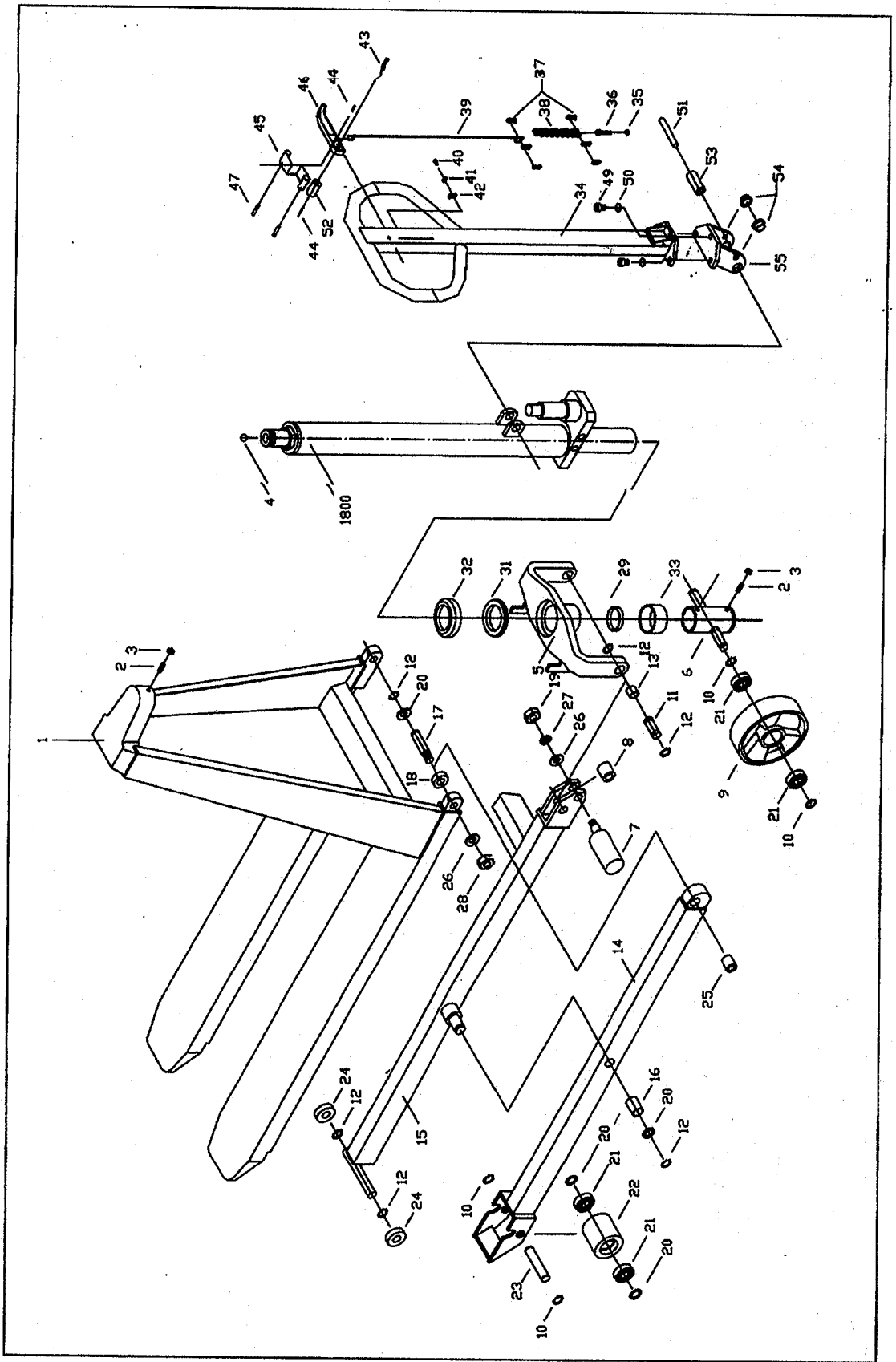


Fig	Reference	Description	Q'ty
1	8838401	Fork	1
2	8838406	Screw	2
3	8838409	Nut	2
4	8838411	Ball	1
5	8838413	Hold Yoke	1
6	8838418	Wheel Yoke	1
7	8838421	Centrifugal Axle	2
8	8838433	Spacer	2
9	8838438	Steering Wheel	2
10	8838443	Snap Ying	8
11	8838449	Pin	2
12	8838455	Snap Ring	10
13	8838465	Bush	2
14	8838468	Leg	2
15	8838471	Leg	1
16	8838475	Bush	1
17	8838477	Pin	2
18	8838479	Washer	2
19	8838481	Nut	2
20	8838483	Washer	6
21	8838485	Ball Bearing	8
22	8838487	Front Wheel	2
23	8838489	Wheel Axle	2
24	8838492	Roller	4
25	8838494	Bush	2
26	8838497	Washer	4
27	8838503	Spring Washer	2
28	8850657	Nut	2
29	8850662	Bush	1
31	8850664	Ball Bearing	1
32	8850666	Spacer	1
33	8850668	Spacer	1

34	8850671	Hand Grip	1
35	8850673	Pendulum Arm Nut	1
36	8850676	Eye Bolt	1
37	8850678	Chair Connector	3
38	8850680	Chair	1
39	8850683	Release Rod	1
40	8850686	Screw	1
41	8850689	Washer	1
42	8850691	Positioner	1
43	8850695	Pin	1
44	8850697	Pin	1
45	8850700	Washer	1
46	8850703	Release Lever	1
47	8850705	Pin	2
49	8850707	Screw	3
50	8850709	Spring Washer	3
51	8850712	Pin	1
52	8850714	Roller	1
53	8850718	Roller	1
54	8850720	Bush	2
55	8850724	Handle Seat	1

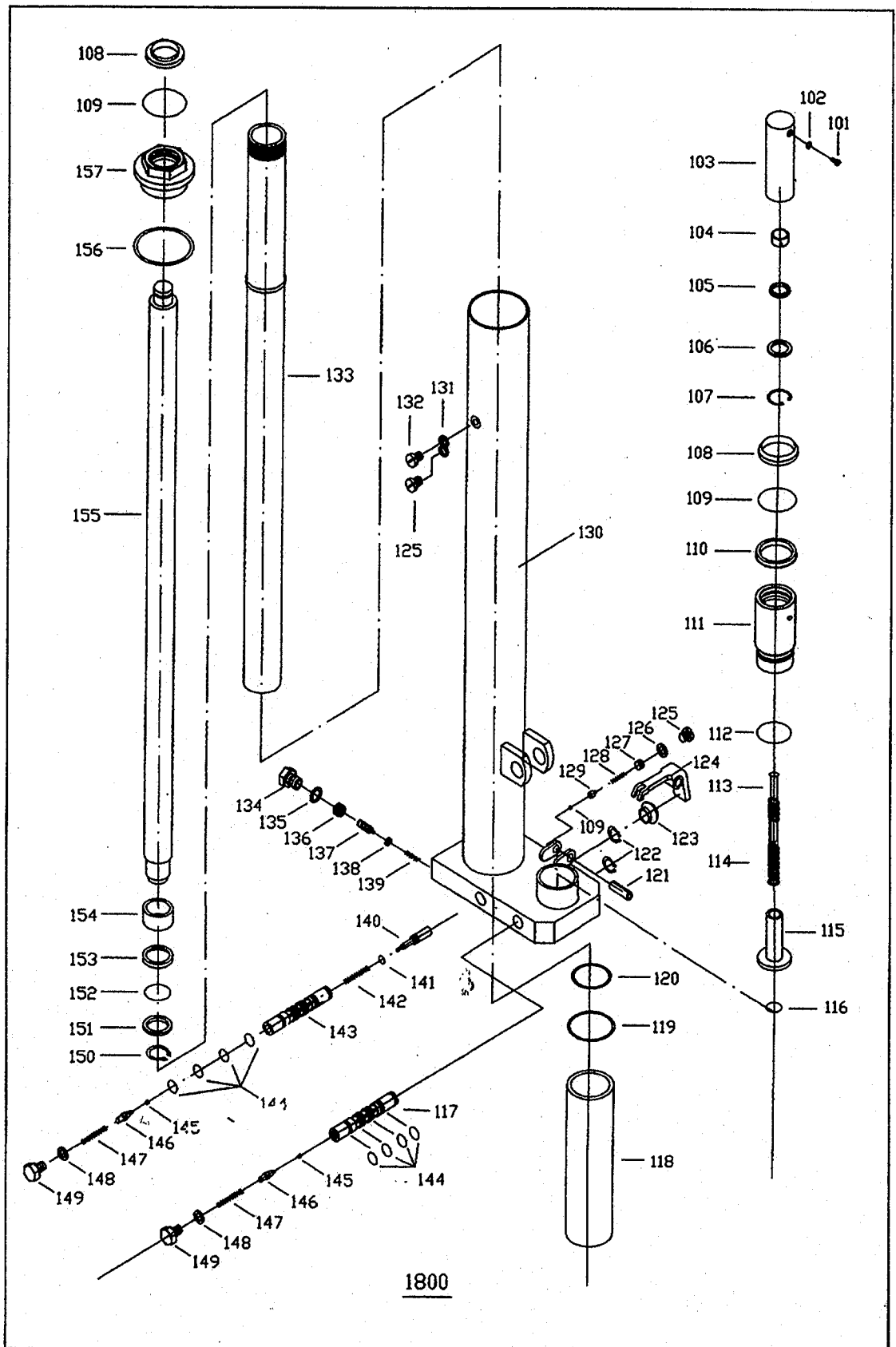


Fig	Reference	Description	Q' ty
101	8850465	Screw	1
102	8850467	Washer	1
103	8850469	Pump piston	1
104	8850471	Guide ring	1
105	8850473	Y-Ring	1
106	8850475	Washer	1
107	8850478	Snap ring	1
108	8850480	Scraper ring	2
109	8850482	O-Ring	2
110	8850484	Y-Ring	1
111	8850487	Pump cylinder	1
112	8850489	O-Ring	1
113	8850492	Spring guide	1
114	8850495	Spring	1
115	8850498	Hi-pressure piston	1
116	8850500	O-Ring	1
117	8850502	Valve insert	1
118	8850504	Cylinder Bush	1
119	8850506	O-Ring	1
120	8850508	O-Ring	1
121	8850510	Snap Ring	1
122	8850512	Split Ring	2
123	8850515	Rubber Sleeve	1
124	8850517	Pendulum Sleeve	1
125	8850519	Screw	2
126	8850521	O-Ring	1
127	8850523	Screw	1
128	8850525	Spring	1
129	8850527	Ball Seat	1
130	8850529	Pump Housing	1
131	8850531	O-Ring	1
132	8850533	Screw	1

133	8850535	Cylinder	1
134	8850804	Screw	1
135	8850806	Seal Ring	1
136	8850809	Screw	1
137	8850811	Screw	1
138	8850816	Plate	1
139	8850820	Spring	1
140	8850824	Release Indicator	1
141	8850826	O-Ring	1
142	8850828	Spring	1
143	8850832	Valve Insert	1
144	8850835	O-Ring	8
145	8850837	Ball	2
146	8850840	Release Valve	2
147	8850844	Spring	2
148	8850849	Seal Ring	2
149	8850852	Screw	2
150	8850855	Snap Ring	1
151	8850858	Y-Ring	1
152	8850861	O-Ring	1
153	8850863	Retaining O-Ring	1
154	8850866	Piston	1
155	8850869	Piston Rod	1
156	8850872	Seal Ring	1
157	8850847	Cylinder Nut	1
	8850877	Handle assembly	1
	8850880	Seal kits	1
	8850881	Steering wheel assembly	2
	8850882	Front wheel assembly	2

VESION TWO